

## Vivienda 31

Superficie (m<sup>2</sup>)

Terrazas..... 34,20

Jardín..... 4,90

Vivienda\*..... 70,50

**Total 109.60**

Sup. construida\*

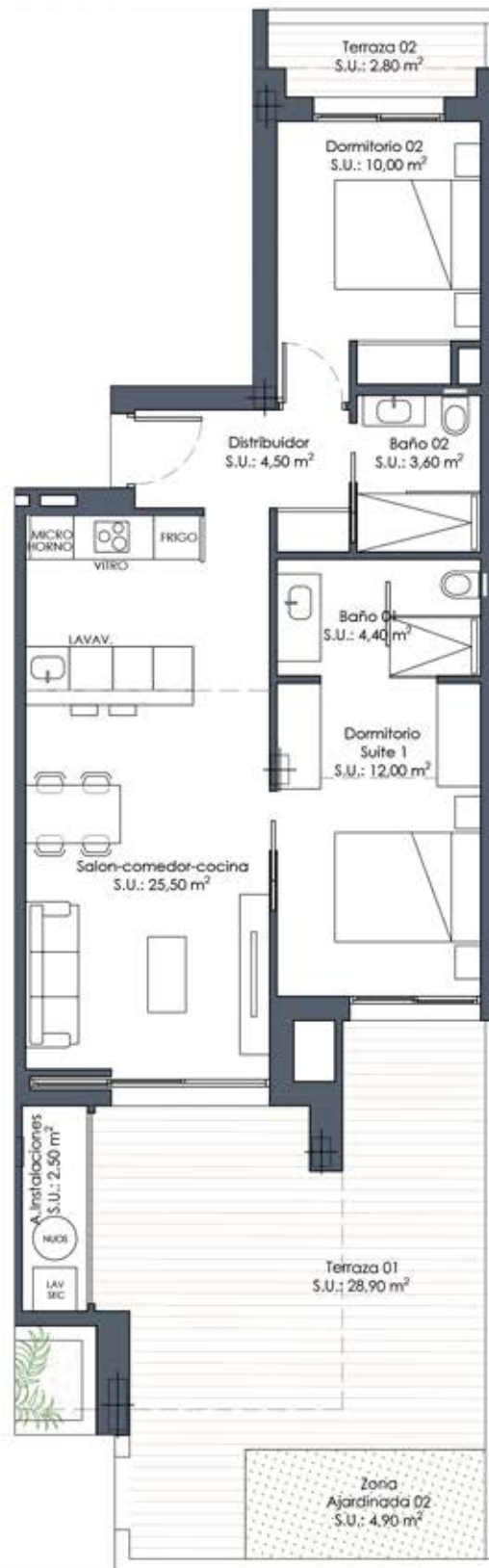
2 dormitorios

2 baños



BLOQUE 3

|    |    |    |    |
|----|----|----|----|
| 36 | 33 | 30 | 27 |
| 35 | 32 | 29 | 26 |
| 34 | 31 | 28 | 25 |



Planta baja