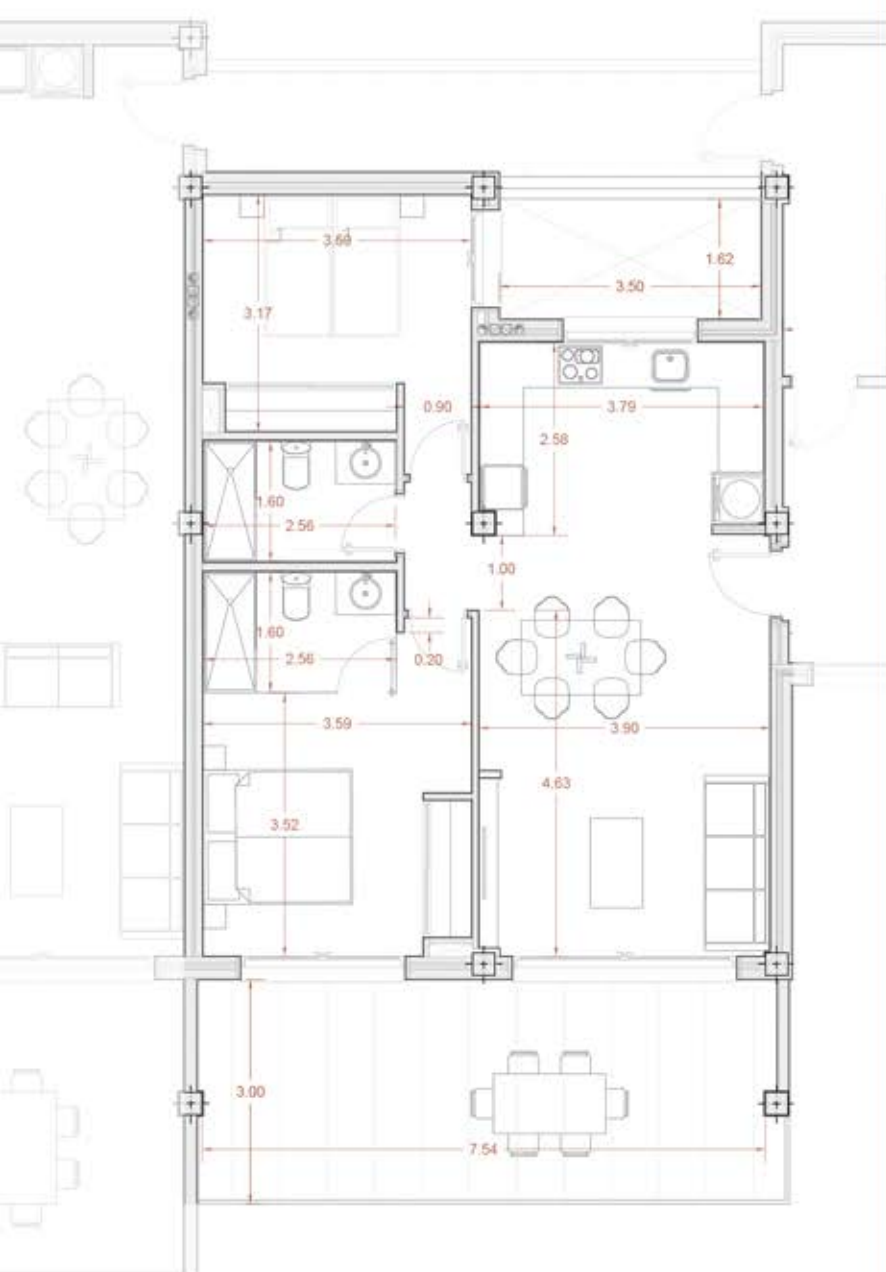


THE IMAGES REFER TO APPROXIMATE SOLUTIONS AND ARE NOT BINDING WITH THE FINAL PROJECT


1ST FLOOR

TYPE B

BLOCK 1 HOUSE 12


SCALE 1:100

1 X BASEMENT PARKING


BUILT SURFACE
101,75 M2

LIVING ROOM KITCHEN	31,60 M2
BEDROOM 1	13,50 M2
BEDROOM 2	11,70 M2
BATHROOM 1	4,00 M2
BATHROOM 2	4,15 M2
CORRIDOR	1,75 M2
COVERED TERRACE 50%	11,50 M2
TOTAL USABLE SURFACE	78,20 M2

