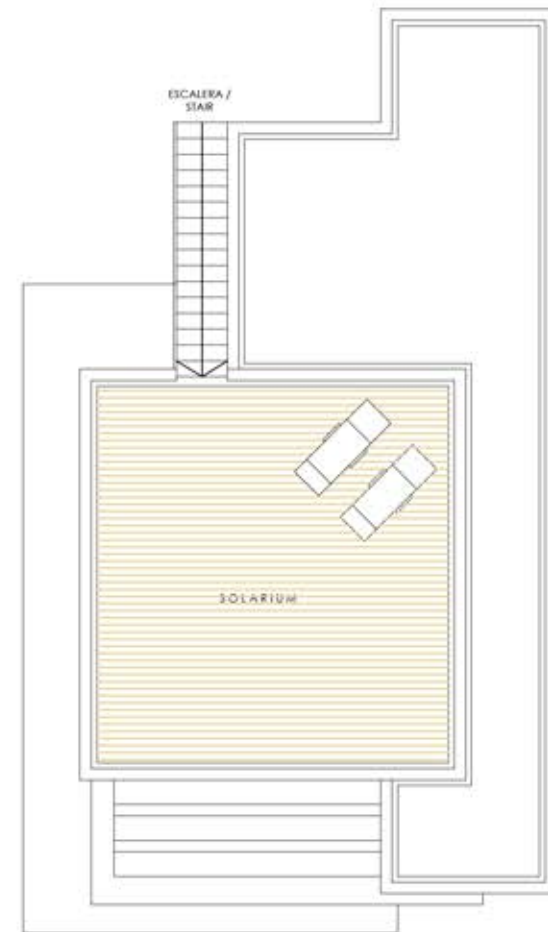
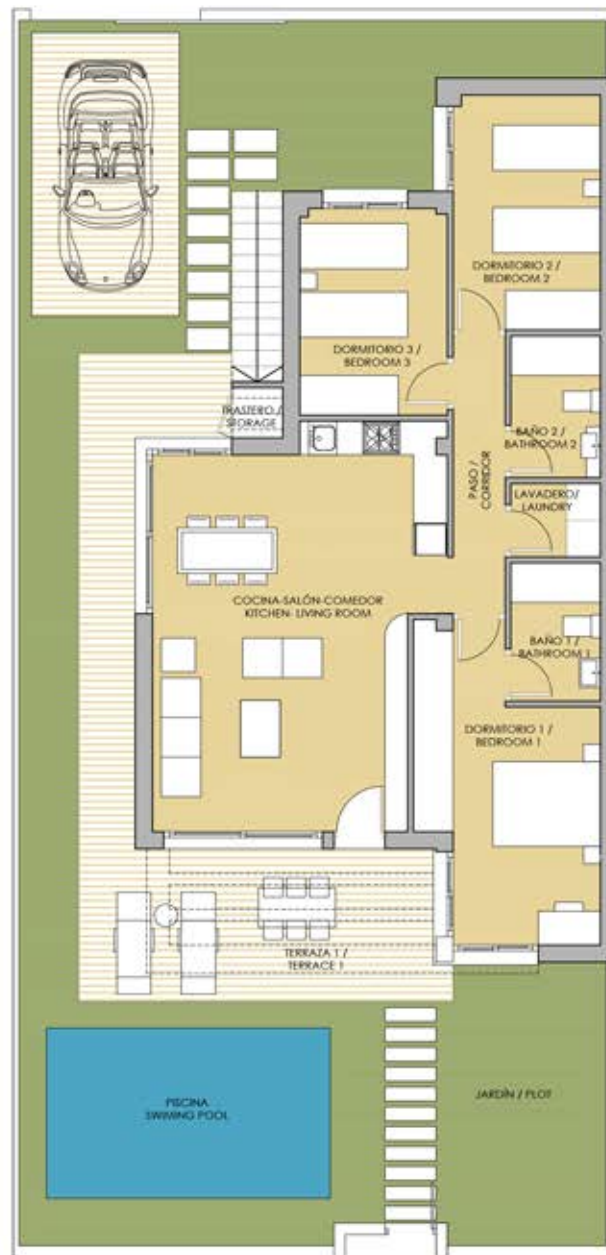


SALÓN -COCINA/ LIVING ROOM-KITCHEN	33.35 m ²
BAÑO 1 / BATHROOM 1	3.85 m ²
BAÑO 2 / BATHROOM 2	3.95 m ²
LAVADERO / LAUNDRY	2.05 m ²
DORMITORIO 1 / BEDROOM 1	14.90 m ²
DORMITORIO 2 / BEDROOM 2	10.75 m ²
DORMITORIO 3 / BEDROOM 3	9.45 m ²
DISTRIBUIDOR / CORRIDOR	4.60 m ²
TRASTERO / STORAGE	0.79 m ²
TERRAZA 1 / TERRACE 1	28.39 m ²
ESCALERA / STAIR	3.91 m ²
SOLARIUM	43.78 m ²
SUP. CERRADA / CLOSED AREA	
CLOSED AREA + TERRACE + SOLARIUM	177.48 m ²
JARDIN / PLOT	232.00 m ²



 **IbericaEstates.com**

☎ +34 625 700 390 ✉ info@iberica-estates.com